

making waves

SUMMER | 2025

A New Chapter of Growth for Waverley!

INSIDE:

Celebrating
Achievement: The Mike
Russell Awards

Growing Skills, Growing
Confidence

Celebrating
International Day for
People with Disability

Alberto's New Chapter:
From Dishes King to
Canteen Star!



Contents

Message From Our CEO Nick Williamson	2
A New Chapter of Growth: Waverley & Knoxbrooke Join Forces to Create More Opportunities	3
Celebrating Achievement: The Mike Russell Awards	4
Alberto's New Chapter: From Dishes King to Canteen Star!	6
Growing Skills, Growing Confidence	7
A Lasting Gift: A Message from Paul House, Deputy Chair of Waverley Social Enterprises	8
Our Workmates in Action	10
Celebrating International Day for People with Disability	12
Waverley Ambassadors Inspire at Terra Verde	13
Special Olympics Stars!	14
Behind the Scenes at Waverley	16





MESSAGE FROM OUR CEO

Dear Waverley Family,

As we wrap up 2025, I'm proud of everything we've achieved together. This edition of Making Waves shows just how far we've come.

A major highlight is that we are welcoming Bayswater's Pack + Assemble business into the Waverley family. This partnership will expand our impact and create even more meaningful employment for people with disabilities.

We also celebrated another outstanding Mike Russell Awards night, recognising long service and personal growth across our workforce. Seeing the pride and joy in the room reminded me of the strength of our community.

Stories like Alberto stepping into greater responsibility in the Canteen, our Grounds Maintenance and Warehouse teams completing new training, and Isabelle and Clinton speaking publicly on International Day for People with Disability show the growing confidence and capability of our Workmates of Waverley. Their progress lifts us all.

Our organisation continues to shine commercially too, with our teams delivering high-quality work for major clients and contributing to recognisable products that make a real difference in the community.

Thank you to everyone who has played a part in this year's success. We are entering 2026 with momentum, purpose and optimism. I'm excited for what comes next and for the lives we'll continue to change together.

Nick Williamson
CEO, Waverley Social Enterprises



A New Chapter of Growth:

Waverley and Knoxbrooke Join Forces to Create More Opportunities

Waverley Social Enterprises is excited to welcome Knoxbrooke Enterprises' Pack + Assemble business to the Waverley family!

This partnership will bring together two purpose-driven organisations with a shared vision: creating meaningful employment for people with disabilities.

Launched by Knoxbrooke in 2023, Pack + Assemble has grown rapidly at its Bayswater site. Soon to be under Waverley's leadership, the business will continue to thrive and expand its social impact.

"It's an exciting new chapter," said Nick Williamson, CEO of Waverley Social Enterprises.

"Together we can provide more opportunities for people with disabilities and continue delivering exceptional services to our clients."

For the Pack + Assemble team, it will be business as usual – same site, same team, same great work – with the added strength of Waverley's support behind them.

"We're proud to see Pack + Assemble continue to grow with Waverley," said Annie Revell, CEO of Knoxbrooke Enterprises. "It's a true win-win for our employees and clients."

With this partnership, Waverley will expand its reach, capability, and impact – empowering even more people with disabilities to build skills, confidence, and community through work.

Above: Manda, Simon, Joanne, Greg, Clinton, Kiran, Marie, Pasquale, Nick, Netta & Michael celebrate the news.

Celebrating Achievements at The Mike Russell Awards

The food was excellent, the raffle prizes were a hit, and the dance floor stayed full all night as we danced to some crowd favourites!



4

Mike Russell Awards continued...

A big thank you to our generous supporters – L'Oréal, Dulux, CSL, Mattel, Spotlight Foundation, Garry the Plumber, Skye Kleening, Good360, and Gideon Services – for donating raffle prizes and helping make the night extra special.

It was a wonderful evening celebrating our amazing Workmates of Waverley and everything they've achieved.



Above: The room was buzzing with conversation and laughter.



Above: (Clockwise) Fleur & Alberto kick off the proceedings. Tim, Alberto and Adam smile for the camera. The sought after Dulux dog is won during the raffle.

Alberto's New Chapter: From Dishes King to Canteen Star!

After 20 years of hard work and dedication, Alberto continues to shine brighter than ever in the Waverley Catering Team. Known fondly as the “Dishes King,” he’s earned enormous respect for his positive attitude and tireless work ethic – but this year, he’s added a few more strings to his bow.

When Catering Manager Natalie joined the team in August, she quickly recognised Alberto’s potential.

“Amongst the floods of potential I discovered, Alberto was one that stood out brighter than ever,” Natalie said.



Above: Alberto making toasted sandwiches.



Above: Alberto running the Canteen

“With support from Miles [Support Mentor] and Steve [Head Chef], his new journey has begun and he’s absolutely thriving.”

In just ten short weeks, Alberto has gone from working alongside Miles in the canteen to confidently running it solo once a week – taking cash payments, serving morning tea and lunch, and doing it all with his trademark enthusiasm.

He’s also been busy in the kitchen, learning meal prep and honing his knife skills under Steve’s guidance.

From helping with hot meals to mastering our famous sausage rolls, Alberto’s growth has been remarkable.

We can’t wait to see what he achieves next year.

Growing Skills, Growing Confidence

Learning never stops at Waverley – and our teams have been proving it in spades.

Over the past few months, our Grounds Maintenance crew has gone above and beyond with their training, earning a series of impressive accreditations and certifications:

- Compliance training
- Traffic Management & Control accreditation
- White Card safety training
- AQF3 Chemical Accreditation

For a team more comfortable outdoors than behind a keyboard, this was a big challenge – but one they tackled with energy and pride.

“I was incredibly proud of their commitment as I worked with each individual on achieving all of the above,” said Denise, our Senior People & Culture Business Partner.

“Typing and navigating a laptop isn’t second nature for most of them, but they embraced it with such a positive attitude.”



Above: Handling dangerous chemicals training using PPE.

“Seeing their face light up when they completed their training on their own was so rewarding,” Denise added.

Meanwhile, our Warehouse team has been strengthening their safety skills too, completing Forklift training and refresher courses – with plenty of smiles along the way.

Next up across both teams: Fire Warden and Health & Safety Representative training, continuing our strong focus on safety and professional development.

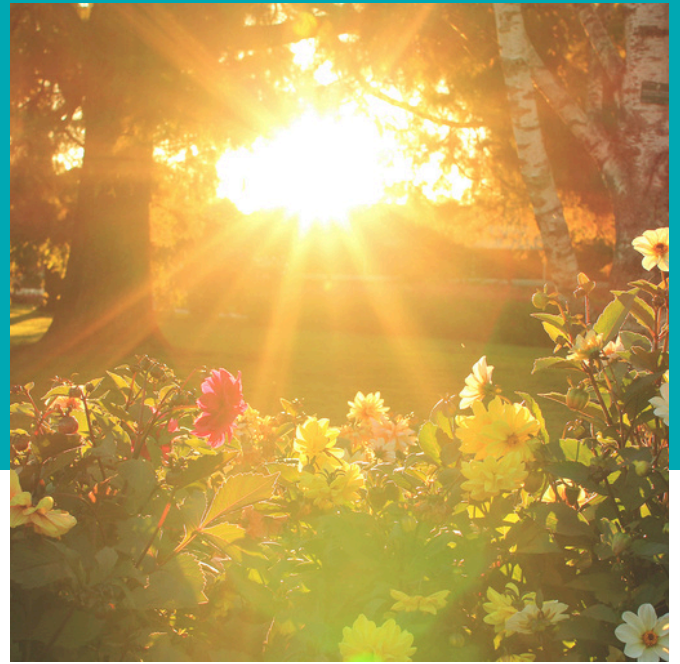
At Waverley, we’re proud to see our people growing their skills, confidence, and careers in all roles across our wonderful organisation.

A Lasting Gift

A MESSAGE FROM PAUL HOUSE,
DEPUTY CHAIR OF WAVERLEY
SOCIAL ENTERPRISES.

When my son joined Waverley 13 years ago, I could never have imagined the opportunities that would unfold for him. Watching his journey has been one of the most profound and rewarding experiences for our family, and it stands as a testament to the truly transformative impact of this organisation.

Waverley has given him far more than a workplace. It has provided the foundations for a meaningful career. He continues to learn new skills, grow in confidence, and contribute with purpose. He now lives independently and has made lifelong friendships.



Waverley has played a pivotal role in shaping his future, and I know their commitment will continue to guide and support him wherever his path leads.

Inspired by what I've seen, I joined the Waverley Board in various roles and now proudly serve as Deputy Chair. My focus, as well as others on the Board, is firmly on the future, on ensuring that generations of young people with disabilities continue to experience the supportive, innovative, and empowering environment that Waverley provides.

Many families and supporters often tell us they want to give back to this extraordinary organisation. And the truth is, you can.



Whether through volunteering your time, supporting our vital fundraising initiatives, or considering a gift to Waverley Social Enterprises in your Will, every contribution supports and strengthens our mission.

While many charities speak about the value of legacy giving, at Waverley a bequest is more than a donation. It is the creation of a legacy that shapes lives for decades to come.

These special gifts enable us to continue pioneering innovative employment pathways for people with disabilities, giving them the independence, education, and opportunities they deserve.



Above: Jackson and Nick in the packaging department.

By leaving a gift in your Will, you help ensure that the journey my son, and so many others have taken at Waverley remains possible for future generations. Your generosity will help build a future in which every supported employee at Waverley has the chance to grow, thrive, and reach their full potential.

To find out more, please contact **Katharine.DixCorke@wavind.org** or call 0402 913 511 for a confidential discussion.



Paul House

Deputy Chair,
Waverley Social
Enterprises

SPOTLIGHT ON SERVICES

Our Workmates in Action



Mailout Magic

When L'Oréal's Maybelline brand needed 1,000 product packages packed and shipped within one day, our team delivered.

With a focus on speed, accuracy, and quality, we completed the full mailout - from packing to dispatch - in a single day, helping Maybelline meet their tight turnaround with confidence.

Product Test with the Best

We were proud to support L'Oréal with their Skinbetter Science brand, preparing Interfuse product testers for market.

Our team carefully packed and applied tester labels, ensuring every detail met the high standards expected of such a premium product.



6000 Cookies!

Our catering team recently had the pleasure of baking and wrapping 6,000 cookies for Metro Trains Melbourne to share with their valued commuters.

The kitchen smelled incredible, and while it was a big job, our Workmates of Waverley came together to make it happen with care and precision.



Deloitte Volunteers

We were proud to host Deloitte's corporate volunteering day in Notting Hill. The group enjoyed getting to know our Workmates of Waverley.

Left: Deloitte volunteers receive certificates from our Workmates

Manny Working His Magic

Meet Manny, one of our vision-impaired Workmates of Waverley. His attention to detail and steady pace make him a key part of our packaging team, assembling boxes for a popular skin care range. Manny proves every day that disability is no barrier to productivity – and that our people truly are our greatest strength.

Right: Manny assembles boxes in packaging department



Contributing to Dignity

Our Workmates were busy packing around 100,000 tampon and pad packs for our client Essity, supporting the incredible Share the Dignity campaign.

This cause helps people experiencing homelessness, fleeing domestic violence, or struggling to afford essential items like period products.

Our team loves knowing their work is making a real difference in people's lives.

Celebrating International Day of People with Disability

International Day for People with Disability was celebrated in true Waverley style this year, with BBQs held at Notting Hill and Hallam.

Each site hosted a fantastic turnout of supported employees, staff, clients, community members and long-time supporters, coming together to share food, stories and connection.

We were especially pleased to welcome Cr Stuart James, the Mayor of the City of Monash, and Cr Stefan Koomen, Mayor of the City of Casey, as well as other esteemed guests from local council and businesses.



Above: Tristan and Paul from Waverley with Barb Wallace, Access & Inclusion Partnerships Officer for City of Monash, and Cr Stuart James, Mayor of Monash.

Their presence and encouragement highlighted how valued our contribution is to the local community and to inclusive employment.

The day was warm, positive and full of proud moments. Most of all, it was a reminder of why we do what we do – creating workplaces where people with disability are respected, included and celebrated.



Above: (Left to right) Kevin, Phirum, Steven, Darren, Jessica, Andrew, Rachel, and Ben at Hallam



Above: (Left to right) Kiran, Izzy and Miles serving up sausages at Notting Hill.

Waverley Ambassadors Inspire at Terra Verde

While celebrations were happening across our sites, the spirit of International Day for People with Disability also travelled into the wider community.

Two of our Waverley Ambassadors, Clinton and Isabelle, were invited to Terra Verde to speak with their staff about what inclusion looks and feels like in the workplace.

Both ambassadors shared their personal experiences as people with disability building skills, confidence and independence through their roles at Waverley.



Above: Eliza Curnow from Terra Verde with Isabelle and Clinton from Waverley.

Isabelle spoke about her goals to transition into open employment and the importance of workplaces that believe in a person's potential.

Clinton shared his pride in the contribution he makes every day and the support networks that have helped him grow.

Their honesty and courage made a real impact and reinforced why representation matters.

We're incredibly proud of both our ambassadors for using their voices to help shape more inclusive workplaces across our community.

Left: Craig, Isabelle and Clinton stand in front of the Suburban Rail Loop map.

Special Olympics Stars



We're so proud of our amazing WOW's (Workmates of Waverley) who took part in the Special Olympics!

Andrew and Vicki absolutely shone, bringing home gold medals in Bocce across the teams, doubles, and singles events.

Left: Vicki & Andrew show their medals for Bocce.

A big congratulations to Heather, who bowled her way to 6th place in bowling – such a fantastic effort!

Right: Heather proudly wears her ribbon for bowling.



Congratulations to Nick who competed in basketball for the Special Olympics. His team achieved 4th place!

A big congratulations to Kelvin who earned an incredible 6 gold medals in swimming events.

Left: Nick proudly shows his ribbon for basketball.

More Star Athletes



Lisa trains consistently every week in swimming, collecting ribbons and medals from multiple competitions in the Special Olympics.

Her dedication to the sport is inspiring!

Left: Lisa shows her collection of ribbons and medals for swimming in the Special Olympics

Anna has been a passionate dancer for many years now and proudly competes in dancing competitions. She loves dance as a form of expression and exercise!

Right: Anna proudly shows her medal for dancing.



Behind the Scenes



Grand Final Fun

The Workmates of Waverley came together to celebrate the Grand Final with a sausage sizzle and plenty of footy colours on show.

It was all about team pride, laughter, and enjoying the day together.

Left: Hallam employees show off their team colours.

Happy Halloween

We celebrated the spooky season with a costume contest at both our Notting Hill and Hallam sites.

Right: Hallam employees mask up!

Below: Notting Hill employees dress to impress!



Behind the Scenes



Caroline Takes Charge!

Catering superstar Caroline has been busy creating these colourful fruit platters. They're fresh, vibrant, and perfect for brightening up any event.

Great work, Caroline – they look amazing!

Left: Caroline creating fruit platters for client orders.

Go the Pies!

Some of our Workmates of Waverley had an amazing time at the Collingwood Football Club game, taking part in the Guard of Honour!

They were so excited to cheer on their team and loved being part of the action on game day.

Right: (From back row, left to right) Claudia, Nick T, Nick W, Kiara, Lynne, Anna's sister and mum, Anna, Nick B, and Colin proudly wave the Collingwood flag.



**Join a
movement
making real
impact**



FRIENDS OF WAVERLEY

What is Friends of Waverley?

Friends of Waverley is a network of individuals, businesses, and organisations committed to supporting meaningful employment opportunities for people with disabilities.

By joining, you become part of a dedicated group working together to create inclusive workplaces, foster community connections, and generate lasting social impact.

Become a Friend!

Get in touch to learn more and start making a difference today.

☎ (03) 9544 7222

✉ communications@wavind.org

Ways to Get Involved



Partner with us

Utilise our high-quality services in catering, grounds maintenance, packaging, assembly and on site labour.



Volunteer with us

Contribute skills, mentorship, or hands-on support.



Make a donation

Provide financial support to expand employment opportunities.



Advocacy & Referral

Help amplify our mission to your business and personal networks

WAVIND.ORG

Get Involved!

USE OUR SERVICES

For catering, grounds maintenance, packaging, assembly or on site labour, contact:



sales@wavind.org

BECOME A WORKMATE OF WAVERLEY

To join us as a Supported Employee, contact:



wow@wavind.org

BECOME A FRIEND OF WAVERLEY

To show your support of our mission, contact:



communications@wavind.org

